

Ophthalmology Quiz

Sudhir Babu P¹, Beatrice Ch²

¹Professor and HOD, ²Assistant Professor, Department of Ophthalmology, Kamineni Institute of Medical Sciences, Narketpally, Nalgonda, TS.

Case 1. A 4 years old male child was brought by their parents with complaints of whiteness of cornea & watering since birth. On examination following findings were seen in portable Slit lamp examination & fundus examination under general anaesthesia. (Fig- 1 & 2)



Fig 1: Corneal image

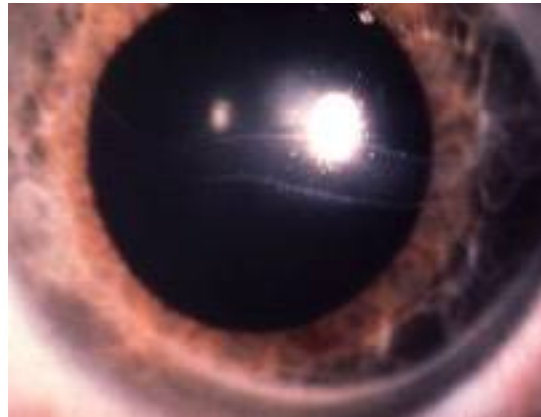


Fig 2: Corneal lesion

- What is the diagnosis?
- What is the line of management?

Case 2. A 18 year old male came to OPD with defective vision in both eyes and complaint of need to change glasses frequently since two years. He also complained of severe itching and rubbing of both eyes since childhood. On examination following findings were seen. (Fig-3 &4)



Fig 3: Inferior lid on down gage

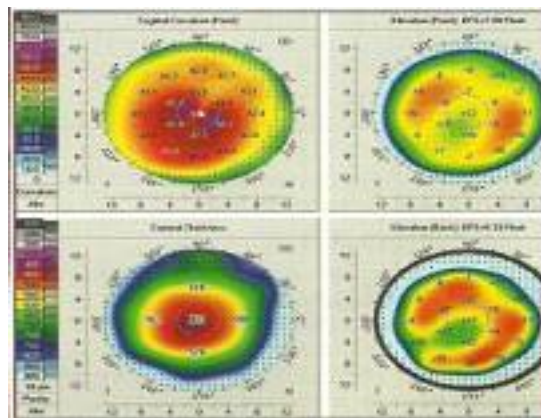
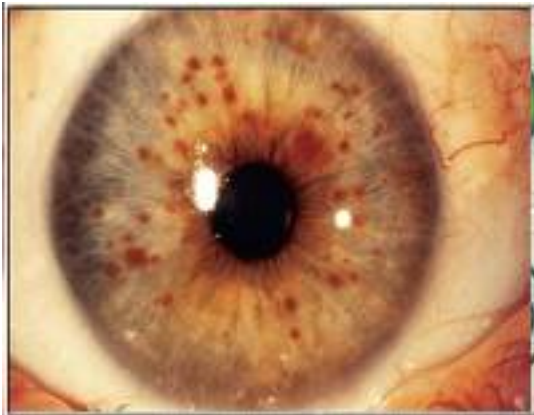


Fig 4: ORB Scan

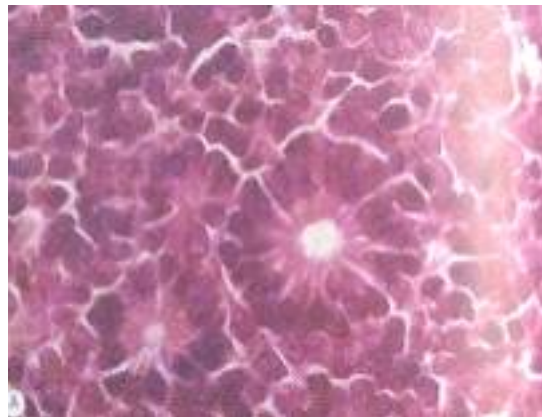
- a. What is the diagnosis?
- B. What are the other signs seen in this particular disease?
- c. What are the various modalities of management?

Case 3. A 31 years old female presented to OPD with complaints of defective vision in both eyes since 1 year. On slit lamp examination following findings were seen as shown in fig – 5 & 6.



- a. What is the diagnosis?
- b. What are the signs seen in the picture?

Case 4. A 5 year old child presented with white reflex in left eye. Histopathology revealed the picture shown in fig – 7 & 8.



- a. Identify the disease.
- b. Name the pathognomonic histopathological picture.
- c. Name three conditions which suggest diagnosis of the above disease.

Please refer page no. 52 for answers

Ophthalmology Quiz - Answers

Case 1. a. Congenital glaucoma.

Primary Congenital glaucoma also known as Buphthalmos (Ox Eye) presents as of triad of 1.Blepharospasm 2.Photophobia 3.Lacrimation and with following signs.

i. Enlarged cornea (Megalocornea > 3mm), with Haab's striae which are horizontal and represent breaks in the descemet's membrane.

ii. Corresponding optic disc changes with increased cup to disc ratio on retinal examination.

b. Management includes decrease in the IOP with Beta blockers in initial stages and surgeries like Goniotomy / Trabeculectomy in later stages of the disease.

Case 2. a. Keratoconus

It is a degenerative condition of the cornea with irregular coning in the central optical part of the cornea. Patient presents with progressive Compound Myopic Astigmatism, on clinical examination USO's sign is positive, i.e- on downward gaze cornea indents the lower lid forming 'V' shaped lower lid margin ORB scan of the patient shows typical steepening of central cornea. Red colour in the central part of cornea shows steeper cornea.

b. Other signs include: Oil drop ref ex.

c. Various modalities of management includes:

i) Initial stage with piggy back contact lenses where hard lens is put over the soft contact lens.

ii) Later stages - optical keratoplasty is the option.

Recent advances in treatment of keratoconus includes - Collagen cross linkage.

Case 3.a. Neurofibromatosis

b. Signs: Lisch nodules on the Iris, S shaped deformity of the upper lid. It is a phakomatosis with autosomal dominant transmission

Case 4.a. Retinoblastoma

b. Histopathological picture shows Flexner Winterstien's rosettes

Child is having Leucocoria (Amauratic Cats Eye Ref ex)

c. Differential diagnosis includes - Congenital Cataract, Coats Disease, Retinopathy of Prematurity. The basic sign of haematogenous pulmonary metastases is one or more discrete pulmonary nodules.